

EVA-54300-D Motion Control Evaluation Kit

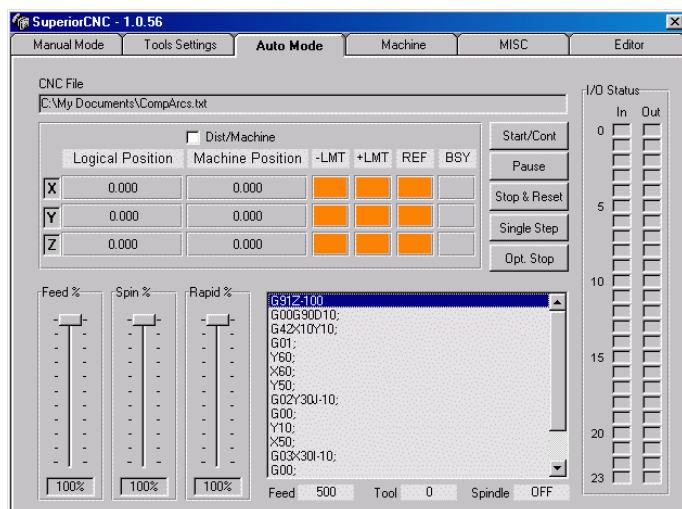
Superior Solutions



The EVA-54300-D complete H/W and S/W package is the fastest and most economical way to evaluate the powerful Series-5000 capabilities

The EVA-54300-D Evaluation Kit provides an excellent opportunity to evaluate Series-5000 with its free software package (SuperiorCNC, Machine Operator Interface, Sequencer, Labview Drivers, HPGL Converter and Experts API 32). The evaluation kit provides the customer with a complete system sample of Series-5000 components in order to experience and fully understand its abilities. The kit enables an immediate integration and operation of the system, using pre-assembled cables between all items.

SuperiorCNC

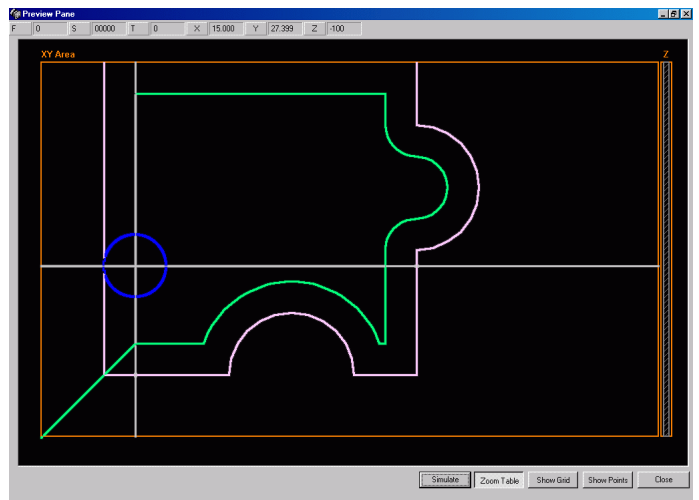


Software Support

The software package includes the SuperiorCNC - CNC Control software, MotoRunner - Complete Graphic Interface for Machine Control and , Win9x/NT/2000/XP DLLs. These tools ensures a short development period for system developers, as well as comprehensive set of tools for immediate operation by the end-user, sparing the need for any additional software development.

The software provides support for GCODE machine language which is compatible with most standard G and M codes. In addition the HPGL/GCODE converter enables you to draw complex outlines and filling using your favorite CAD software and then convert it into a motion script without writing any code.

Labview drivers allows users who are familiar with this programming environment to access and control a machine using the dedicated virtual instruments.



The Evaluation Kit Includes:

- PMC-54300-D** Triple Axis PCI Controller (w/Spindle Port)
- PMD-53031** Triple 3Amp Micro-Step Driver
- PM-5232-5528-D1** 3 Stepper Motors, RFI Enclosed
- PW-543142-2** Control Interfacing Cable, RFI Shielded
- PW-509011-2** 3 Motor Driving Cables, RFI Shielded
- PFB-52D001** Dual Passive Micro-Switches D9M Cables
- PSW-MR543** Series-5000 Software Package (CD)

Ordering Information

- EVA-54300-D** Motion Control CNC Evaluation Kit